

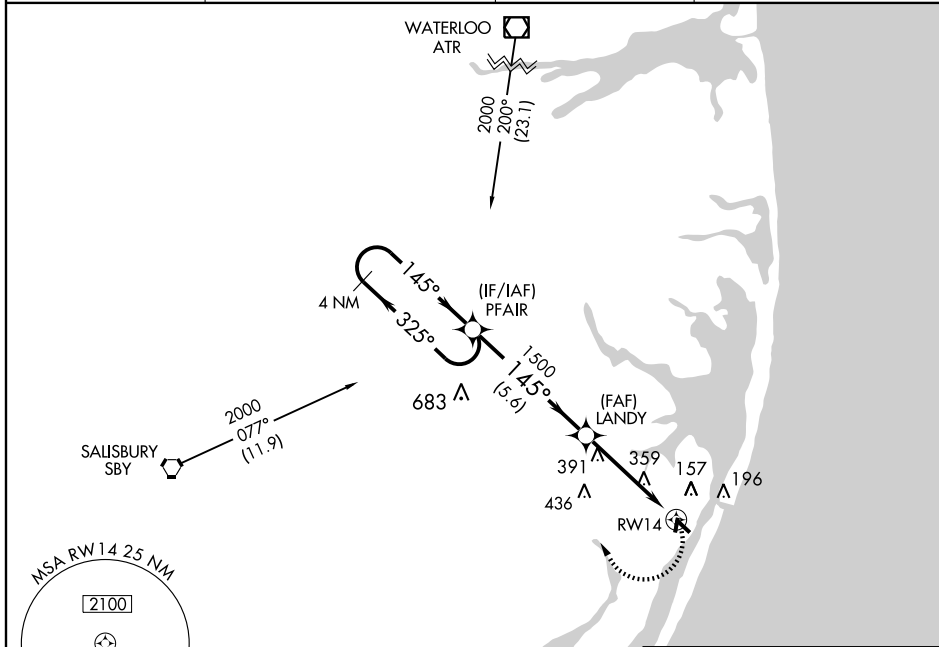
RNAV (GPS) RWY 14

OCEAN CITY MUNI (OXB)

APP CRS 145°	Rwy Idg 4072
	TDZE 11
	Apt Elev 11

	GPS or RNP -0.3 required. DME/DME RNP -0.3 NA.	MISSED APPROACH: Climbing right turn to 2000 via 325° course to PFAIR and hold.
	NA	

ASOS 119.025	PATUXENT APP CON * 127.95 314.0	CLNC DEL 121.75	UNICOM 123.05 (CTAF) 0
------------------------	---	---------------------------	----------------------------------



NE-3, 23 SEP 2010 to 21 OCT 2010

NE-3, 23 SEP 2010 to 21 OCT 2010

4 NM Holding Pattern		PFAIR		LANDY		RWY 14	
2000 ← 325°		145° →		145°		3.09° TCH 34	
5.6 NM		4.4 NM		2000		PFAIR	
CRS 325°		145° to RWY 14		0Z		TDZE 11	
ELEV 11		3201 X 75		4072 X 75		72	
CATEGORY		A		B		C	
LPV DA		NA		NA		NA	
LNAV/VNAV DA		NA		NA		NA	
LNAV MDA		700-1 689 (700-1)		700-2 689 (700-2)		700-2 1/4 689 (700-2 1/4)	
CIRCLING		700-1 689 (700-1)		700-2 689 (700-2)		720-2 1/4 709 (800-2 1/4)	

MIRL Rwy 2-20 and 14-32 0