

OCEAN CITY, MARYLAND

AL-5284 (FAA)

LOC RWY 14

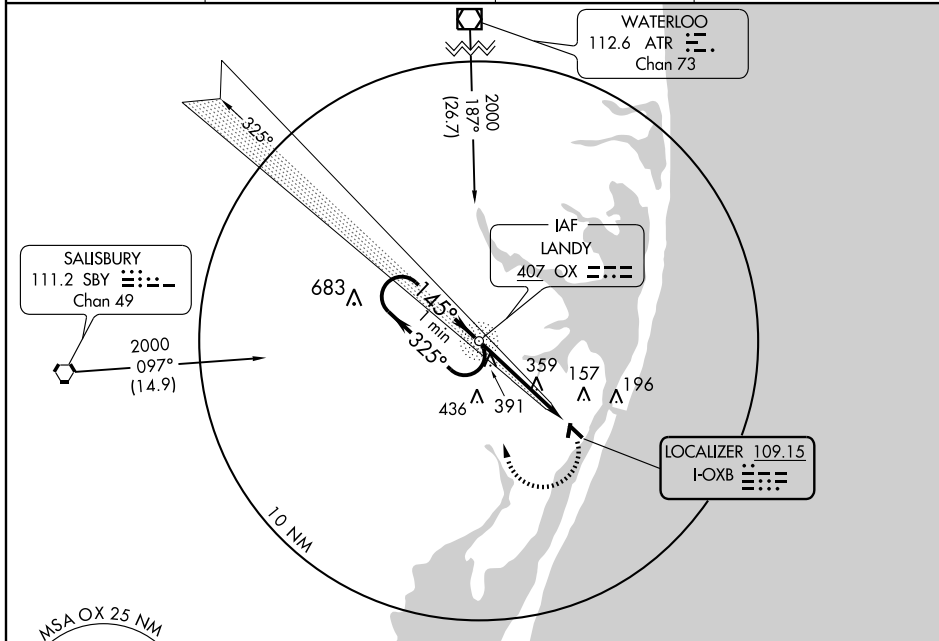
OCEAN CITY MUNI (OXB)

LOC I- OXB	APP CRS	Rwy Idg 4072
109.15	145°	TDZE 11
		Apt Elev 11

▽ MISSED APPROACH: Climbing right turn to 1700 direct OX NDB and hold.

▲ NA

ASOS 119.025	PATUXENT APP CON * 127.95 314.0	CLNC DEL 121.75	UNICOM 123.05 (CTAF) 0
------------------------	---	---------------------------	----------------------------------



NE-3, 23 SEP 2010 to 21 OCT 2010

NE-3, 23 SEP 2010 to 21 OCT 2010

ADF REQUIRED



One Minute Holding Pattern

NDB

1700

325°

145°

1500

3.52°

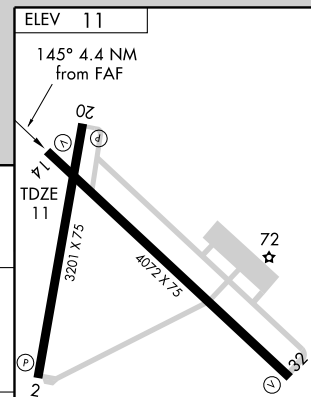
TCH 34

4.4 NM

OX

TDZE 11

407



CATEGORY	A	B	C	D
S-14	700-1 689 (700-1)		700-2 689 (700-2)	700-2 1/4 689 (700-2 1/4)
CIRCLING	700-1 689 (700-1)		700-2 689 (700-2)	720-2 1/4 709 (800-2 1/4)

MIRL Rwy 2-20 and 14-32 0

FAF to MAP 4.4 NM

Knots	60	90	120	150	180
Min:Sec	4:24	2:56	2:12	1:46	1:28

OCEAN CITY, MARYLAND
Amdt 2 10098

38°19'N · 75°07'W

OCEAN CITY MUNI (OXB)
LOC RWY 14